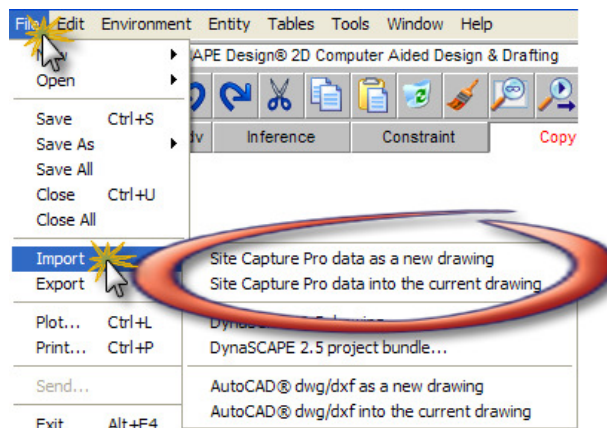


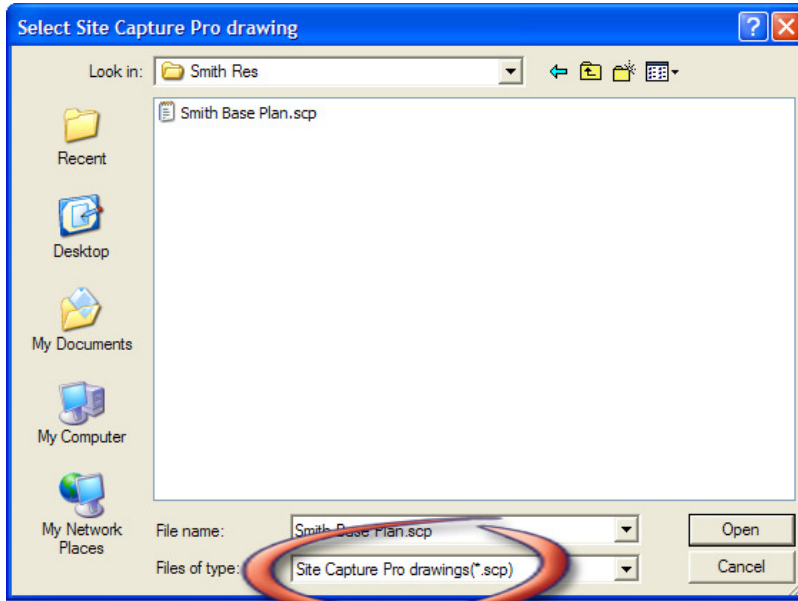
Importing NuPoints® SiteCapture Pro® data

This is a feature that is included with DynaSCAPE Design version 4.3 and newer. This feature allows you to import data (geometry) from NuPoints® SiteCapture Pro® software. This software is installed on a hand held electronic organizer (PDA) that enables you to accurately draw site measurements out in the field. The process of importing this data is very simple.

1. Copy the SiteCapture Pro® file (.scp) to your computer so you can access it for the import
2. In DynaSCAPE Design click on the **File** menu and select **Import** and choose one of the following options:



- **Import > SiteCapture Pro data as a new drawing** - this option will import the geometry into a new DynaSCAPE prototype. It will open a prototype that is the same as the last prototype opened.
- or**
- **Import > SiteCapture Pro data into the existing drawing** - this option will import the geometry into the current DynaSCAPE drawing that is open. It is recommended that when you use this option that you open a new prototype that is the sheet size and scale you wish to use for this project.
3. You will be prompted to choose the file you wish to import. Locate the SiteCapture Pro® drawing (.scp) and click Open.



- The geometry will import quickly and appear on the DynaSCAPE screen. SiteCapture Pro® software uses a layer system that will convert to DynaSCAPE layers:

SiteCapture Pro® Layer	DynaSCAPE Layer
Building	Building
PropLine	Property
Pavement	Driveway
Ret. Wall	Driveway
Fences	Fence
Pool/Deck	Patio
Plants	Plantbed

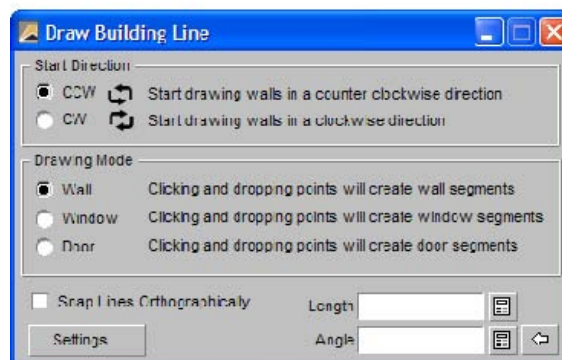
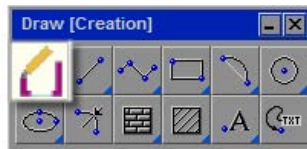
- You are now ready to begin your design project. It is recommended to redraw the building outline with the new Building Outline tool.

Redrawing the Building Outline

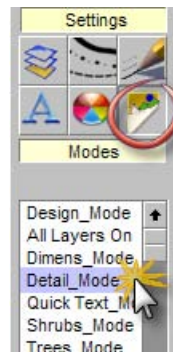
Since the imported building outline is only a single layer, it is recommended that you redraw the building outline. The default setting for the Building layer in most prototypes in DynaSCAPE is six-inches (6"). The problem with heavy CAD lines is that the actual length is measured from the centre of the line, not the outside edge. This can become an issue in a number of instances.

The easiest way to redraw the building outline is to simply trace it using the new Building Outline tool. Follow these steps:

1. Revise the building outline to the **Detail** layer.
2. Click on the **Building Outline** tool and choose your **Start Direction**.



3. Using inference, trace the building outline. You can use the window and door modes now if applicable.
4. Once the building outline has been traced, click on the **Detail_Mode** to isolate the Detail layer and erase the original building line.



Note: For more detailed instructions on how to use the Building Outline tool see **Chapter 6 - Basic Drawing Tools** in the DynaSCAPE Design manual.